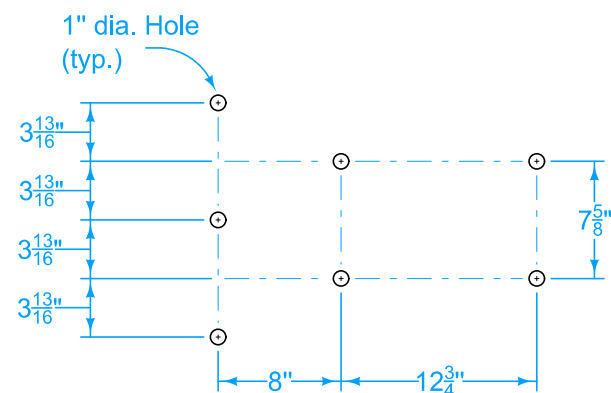
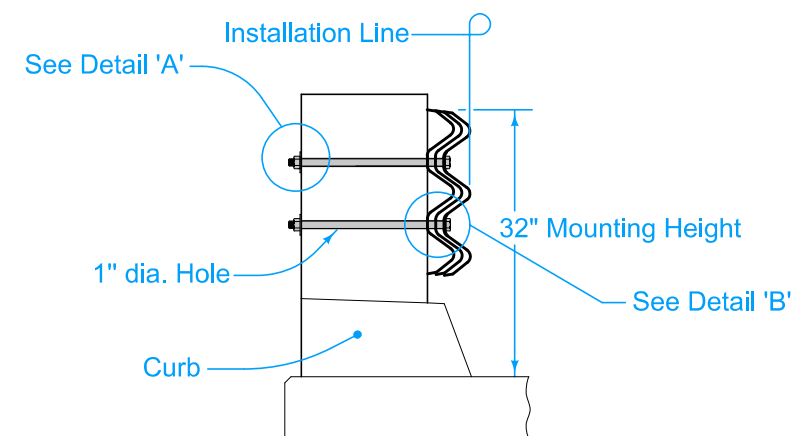


- ① See BA-201.
- ② BTS post # 14 BA-201. BTS post #5 BA-221.



**ELEVATION**



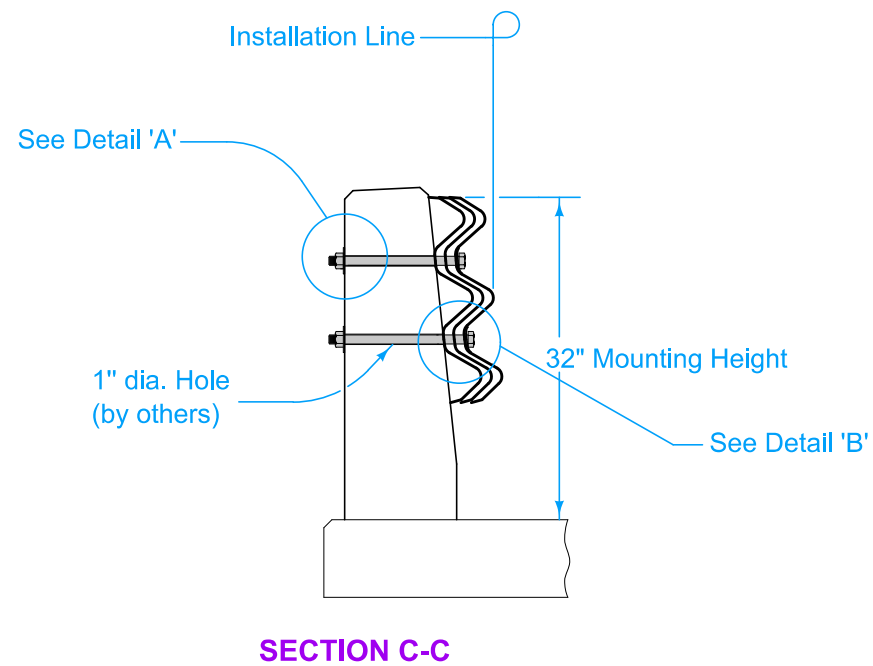
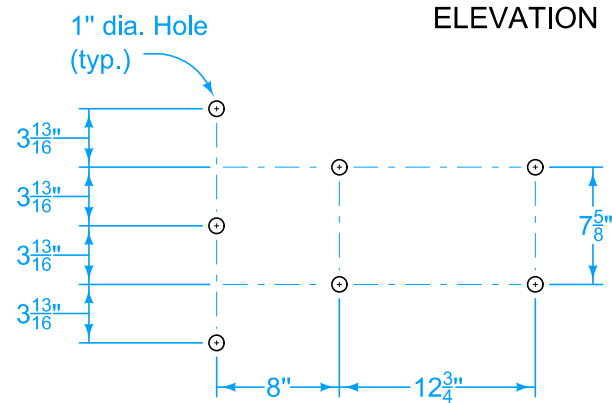
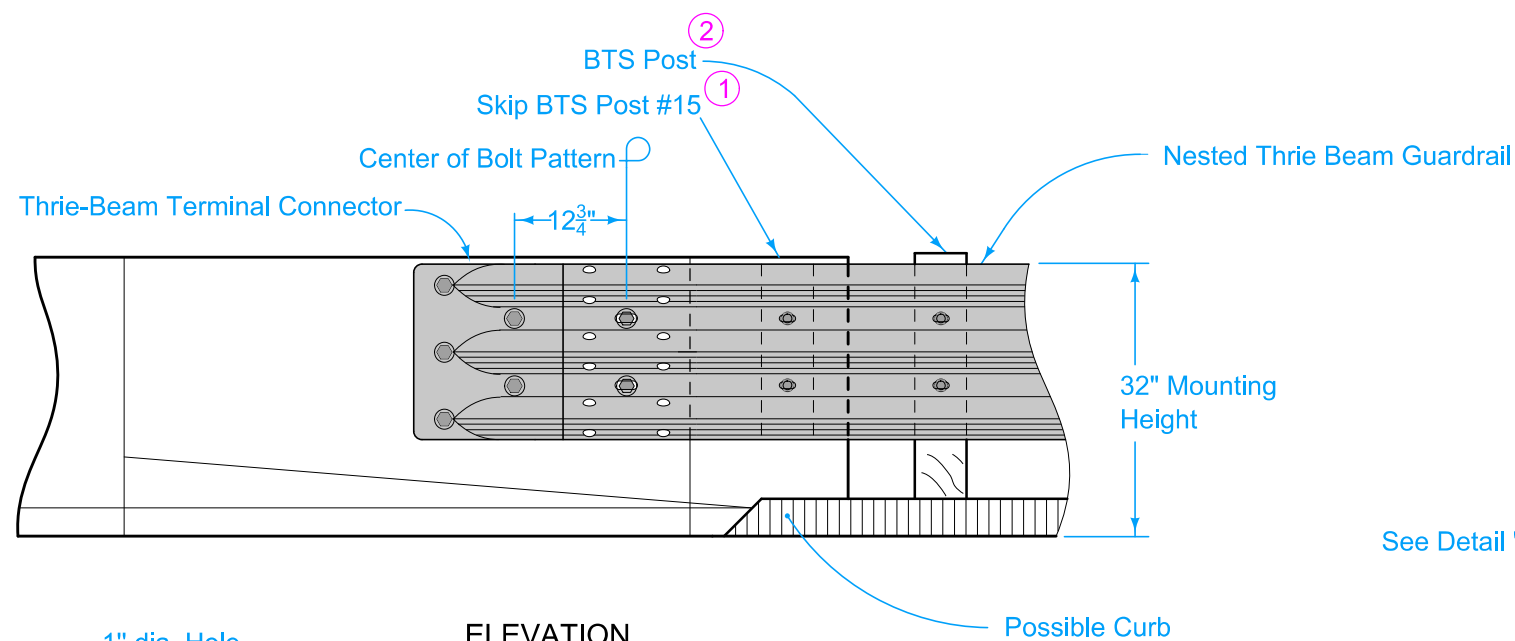
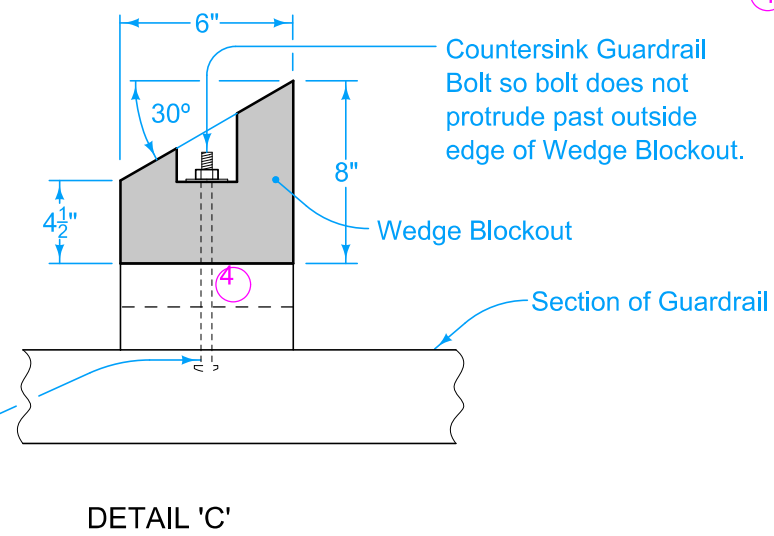
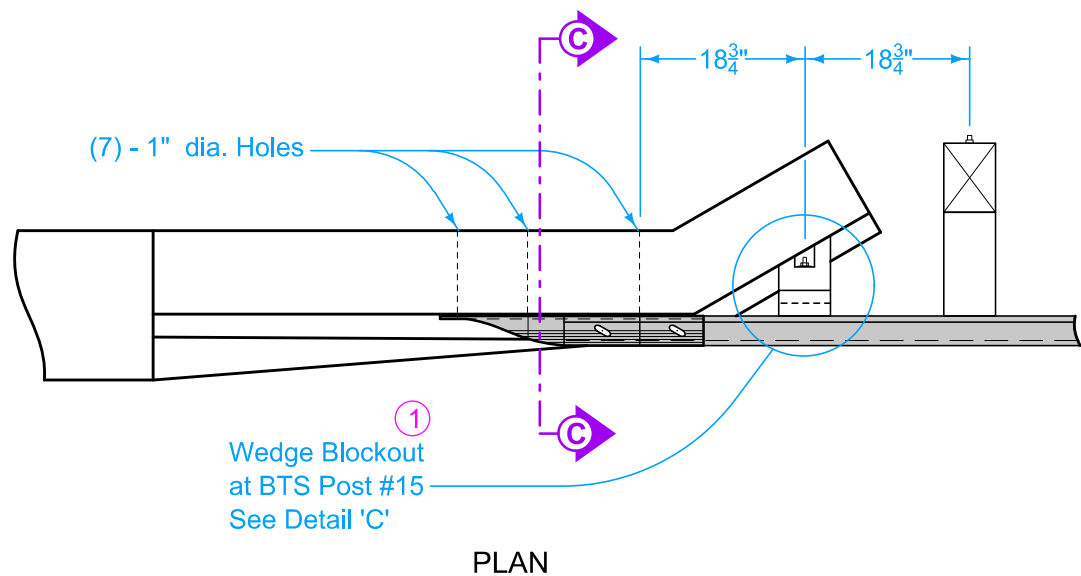
**7 - BOLT PATTERN**  
Thrie - Beam Terminal Connector



**SECTION B-B**

 IOWA DOT	REVISION	
	6	4-15-25
	BA-202	
STANDARD ROAD PLAN		
SHEET 2 of 4		
REVISIONS:	Added 32" mounting height to Type 'D'.	
		
APPROVED BY DESIGN METHODS ENGINEER		
STEEL BEAM GUARDRAIL BOLTED END ANCHOR		

TYPE C

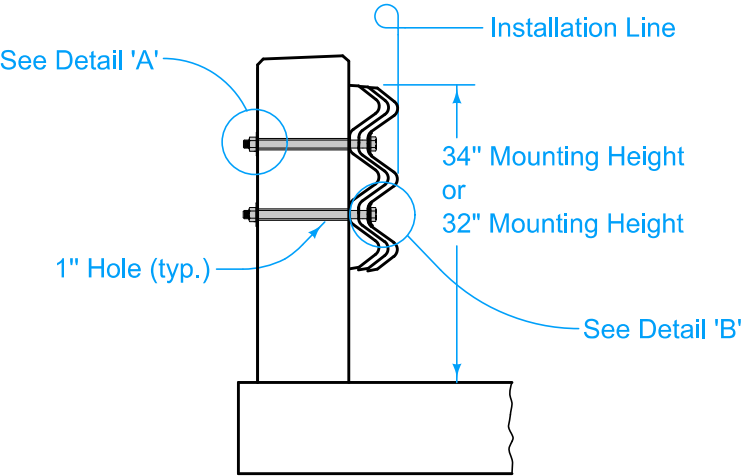
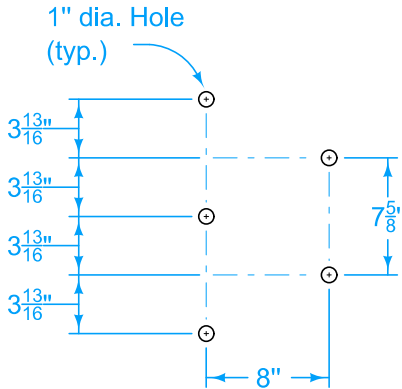
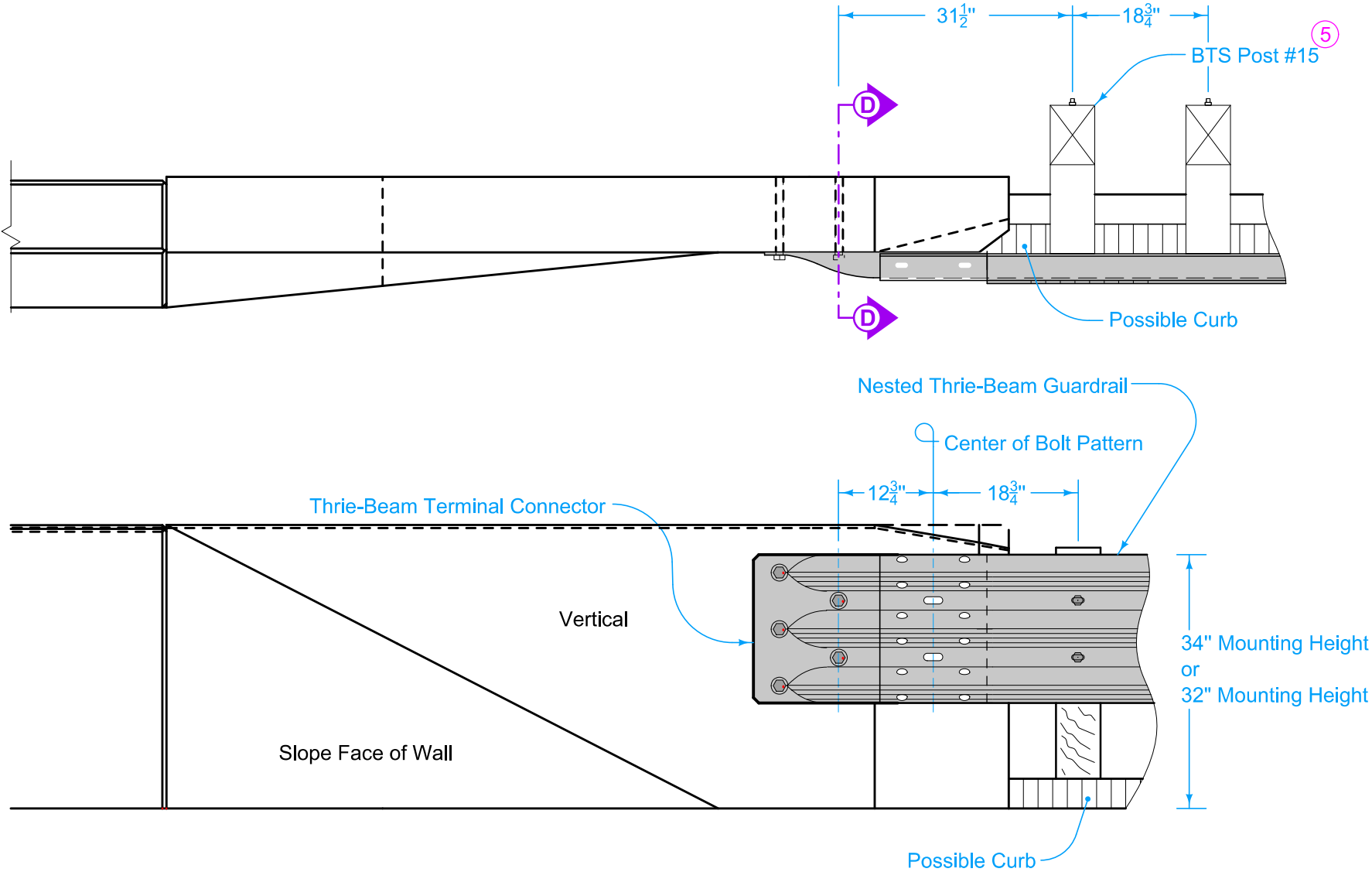


- 1 See BA-201.
- 2 BTS post # 14 BA-201. BTS post #5 BA-221.
- 4 Use treated spacer boards (1 in. x 6 in. or 2 in. x 6 in.) to produce a tight fit between the wedge blockout and endpost. A nominal 1 inch gap is acceptable. Spacer boards are incidental to bolted end anchor.


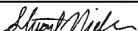
<div>IOWA IDOT</div> <div>STANDARD ROAD PLAN</div> <div>REVISIONS:      Added 32" mounting hieght to Type 'D'.</div> <div><div><div><div></div><div></div><div></div></div><div><i>Shawn Miller</i></div></div><div>APPROVED BY DESIGN METHODS ENGINEER</div></div>	REVISION	
	6	4-15-25
	BA-202	
	SHEET 3 of 4	
<div>STEEL BEAM GUARDRAIL</div> <div>BOLTED END ANCHOR</div>		

TYPE D

5 See BA-209 for 34" mounting height. See BA-201 for 32" mounting height.



SECTION D-D

 IOWA   DOT	REVISION	
	6	4-15-25
	BA-202	
	SHEET 4 of 4	
REVISIONS:      Added 32" mounting hieght to Type 'D'.		
		
APPROVED BY DESIGN METHODS ENGINEER		
STEEL BEAM GUARDRAIL BOLTED END ANCHOR		